

# Goodyear Wheel and Brake INDEX

## BRAKES

| Aircraft Mfgr. & Model   | Assembly Numbers  | Size  | Page  |
|--|---|---|---|
| <b>BARKLEY-GROW</b><br>T8P   | 510012M   | 6 Inch  | 442-C   |
| <b>BEECH</b><br>Bonanza 35<br>T-34<br>35, 95<br>55, 95<br>17<br>18S<br>50 Twin Bonanza<br>Queen Air 65, Model 50<br>and 80   | 511731<br>9531281, 9531138*<br>9532412, 9532167*<br>9531712, 9532679<br>511659M, 218262M<br>9531637<br>9530303<br>9532491                           | 6.50-8<br>6.50-8<br>6.50-8<br>6.50-8<br>7.50-10<br>11.00-12<br>24x7.7<br>24x7.7           | 432<br>433<br>433<br>433<br>435<br>437<br>442<br>442-A      |
| <b>BEECHCRAFT</b><br>18  | 731799M   | 5 Inch  | 442-C   |
| <b>BELL</b><br>47  | 9520425, 9520264*<br>9520908*   | 5.00-5  | 429   |
| <b>BELLANCA</b><br>Crusair<br>260<br>Aircruiser  | 9820298<br>9532181, 9532278*,<br>9541936*<br>510012M  | 6.00-6<br>6.00-6<br>6 inch  | 431<br>432<br>442-C   |
| <b>BRANTLY</b><br>305  | 9532741   | 6.00-6  | 432   |
| <b>CALL-AIR</b><br>Cropduster  | 9520517   | 6.00-6  | 430   |
| <b>CAM AIR</b><br>480<br>480   | 511731<br>9531281, 9831138*   | 6.50-8<br>6.50-8  | 432<br>433  |
| <b>CESSNA</b><br>150<br>120, 140<br>120, 140<br>170, 172, 175, 180, 182,<br>Skylane<br>180 (Edo Amp. Ldg. Gear)<br>172, 175, 180, 182, 210,<br>Skylane<br>190, 195, 310<br>310, 320<br>150 and Crone | 9532302, 9532109*<br>9520517<br>9520298<br>9530839<br>9531446<br>9532181, 9532278*,<br>9541936*<br>9520923, 9531731<br>9532974, 9532449*<br>218262M | 5.00-5<br>6.00-6<br>6.00-6<br>6.00-6<br>6.00-6<br>6.00-6<br>6.50-10<br>6.50-10<br>7.50-10 | 429<br>430<br>431<br>431<br>431<br>432<br>434<br>435<br>435 |
| <b>COLUMBIA</b><br>Skyranger   | 9520298   | 6.00-6  | 431   |
| <b>CONVAIR</b><br>340, 440, 560<br>240   | 9540621, 9540622,<br>9540976, 9541104,<br>9541105<br>9540245  | 12.50-16<br>34x9.9  | 438<br>442-B  |
| <b>DEHAVILLAND</b><br>Beaver   | 9530997, 511659M  | 7.50-10   | 435   |
| <b>DOMAN</b><br>LZ5  | 9520425   | 5.00-5  | 429   |
| <b>DOUGLAS</b><br>DC3 and Super DC's<br>DC6, DC4 Conversion<br>DC6, 6A and 6B  | 9540385<br>9540039<br>9540504, 9540505,<br>9560164, 9560165*  | 17.00-16<br>17.00-20<br>17.00-20  | 439<br>440<br>441   |
| <b>EMIGH</b><br>Trojan A1 and A2   | 9520425   | 5.00-5  | 429   |
| <b>ERCOUPE</b>   | 9520285   | 6.00-6  | 430   |
| <b>FAIRCHILD</b><br>F27<br>PC-6 Turbo-Porter<br>PC-6 Turbo-Porter<br>Amphibian   | 9541584<br>9542989<br>510012M   | 9.50-16<br>7.50-10<br>6 Inch  | 437<br>436<br>442-C   |
| <b>FAIRCHILD-HILLER</b><br>FH2278  | 9550336   | 9.50-16   | 436   |
| <b>FORNEY</b><br>Air-Coupe   | 9520285   | 6.00-6  | 430   |
| <b>FUNK</b><br>B4, R4  | 511254A   | 6.00-6  | 430   |
| <b>GLOBE</b><br>Swift<br>Swift   | 9520517<br>9520298  | 6.00-6<br>6.00-6  | 430<br>431  |
| <b>GRUMMAN</b><br>Gulfstream<br>Gulfstream II  | 9542558, 9541732*<br>9550266  | 7.50-14<br>32x8.8   | 436<br>442-C  |

\* Obsolete, Parts Available

## BRAKES

| Aircraft Mfgr. & Model  | Assembly Numbers  | Size   | Page                                     |
|---|---|--|--|
| (GRUMMAN, continued)<br>Mallard and Goose<br>Conversion   | 9540152   | 9.50-16  | 436                                      |
| <b>HOWARD</b><br>DG and NH<br>Super Ventura<br>Super Ventura and Model<br>500   | 218262M<br>9541104<br>9541658   | 7.50-10<br>12.50-16<br>16.00-16                                    | 435<br>438<br>438                        |
| <b>KAMAN</b><br>K225  | 9520425   | 5.00-5   | 429                                      |
| <b>LAKE</b><br>Skimmer  | 9532181, 9541936*   | 6.00-6   | 432                                      |
| <b>L.C. SMITH</b><br>Modification of B26  | 9540505   | 17.00-20   | 441                                      |
| <b>LEAR</b><br>Star Conversion<br>Jet 24  | 9540621, 9540622,<br>9540976, 9541104,<br>9541105<br>9550273                          | 12.50-16<br>18x5.5   | 438<br>442                               |
| <b>LOCKHEED</b><br>14 and Lodestar<br>Constellation, 049, 649,<br>749A<br>Constellation, 049, 649,<br>749A<br>1049, 1049C, 1049D, 1049E,<br>1049G, 1049H<br>Constellation, 1049, 1049C<br>1049D, 1049E, 1049G, 1049H<br>Electra 10 and 12 | 510967-2M1<br>511031<br>9541101<br>9540754<br>9540755<br>510012M                      | 15.00-16<br>17.00-20<br>17.00-20<br>17.00-20<br>17.00-20<br>6 Inch | 438<br>439<br>440<br>439<br>440<br>442-C |
| <b>LUSCOMBE</b><br>Silvaire 8 and 8A<br>Sedan 11  | 9530131<br>9520767  | 6.00-6<br>6.00-6   | 430<br>431                               |
| <b>MARTIN</b><br>202, 202A, 404   | 9540494   | 12.50-16   | 437                                      |
| <b>MIDGET RACING<br/>PLANES</b>   | 9532302, 9532109*<br>9520425  | 5.00-5   | 429                                      |
| <b>MIDSTATES</b><br>Helio-Courier   | 9531281, 9531138*   | 6.50-8   | 433                                      |
| <b>MOONEY</b><br>MU-2   | 9542679   | 24x7.7   | 442-A                                    |
| <b>MYSTERE</b><br>20 (Falcon)   | 9550212   | 26x6.6   | 442-C                                    |
| <b>NORTH AMERICAN</b><br>Sabreliner<br>Sabreliner   | 9550338<br>9543102  | 26x6.6<br>26x6.6   | 442-A<br>442-B                           |
| <b>OMEGA</b><br>BS12Ar  | 9530839   | 6.00-6   | 431                                      |
| <b>PIASECKI</b><br>Rescuer  | 9520767   | 6.00-6   | 431                                      |
| <b>SCHWEIZER</b><br>Glider  | 511254A   | 6.00-6   | 430                                      |
| <b>SIKORSKY</b><br>S52 Helicopter<br>R4<br>S55, S58, S61L<br>S58<br>S58<br>S56  | 9520425<br>511254A<br>9520926, 9531456,<br>9532425<br>530886SG<br>530886SG<br>9530721 | 5.00-5<br>6.00-6<br>6.50-10<br>11.00-12<br>11.00-12<br>24x7.7      | 429<br>430<br>434<br>434<br>437<br>442   |
| <b>SPARTAN</b><br>Executive   | 218262M   | 7.50-10  | 435                                      |
| <b>STINSON</b><br>150, 165<br>150, 165<br>SR6 to SR9<br>A, T, U   | 9520093<br>9520292, 9521239<br>218262M<br>510012M                                     | 6.00-6<br>6.00-6<br>7.50-10<br>6 Inch                              | 430<br>431<br>435<br>442-C               |
| <b>UMBAH</b><br>U-18  | 9532741   | 6.00-6   | 432                                      |
| <b>TRECKER</b><br>P-166   | 9530303   | 24x7.7   | 442                                      |
| <b>TUSCO-NAVION</b><br>Rangemaster  | 9541868   | 6.50-8   | 434                                      |
| <b>VERTOL</b><br>107 Model II<br>44   | 9542228, 9541824<br>9530721   | 18x5.5<br>24x7.7   | 441<br>441                               |
| <b>WACO</b><br>E and N  | 218262M   | 7.50-10  | 435                                      |

# MAIN WHEEL 6.00-6

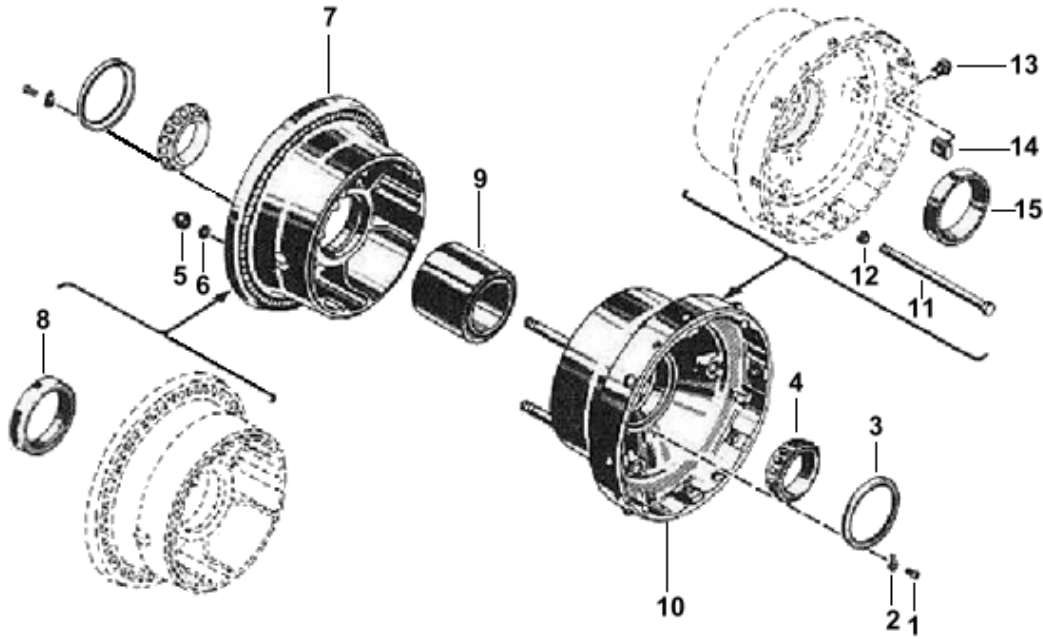


Figure 6.00-6MW2 – TUBE TYPE MAIN WHEEL  
 Assembly No. 5114135

6.00-6 Tube Type Main Wheel (High Flange) Assembly No. 511413S

USED ON: Aeronca Champion and Chief with 6.00-6 Tire 4PR TT.  
 Bellanca Cruisair with 7.00-6 Tire 4PR TT.  
 Cessna 120 and 140 with 6.00-6 Tire 4PR TT.  
 Columbia Sky Ranger with 6.00-6 Tire 4PR TT.  
 Funk B4, R4 with 6.00-6 Tire 4PR TT.  
 Globe Swift with 6.00-6 Tire 4PR TT.  
 Luscombe 11A with 7.00-6 Tire 4PR TT.  
 Luscombe 8 with 6.00-6 Tire 4PR TT.  
 Stinson 150 with 6.00-6 Tire 4PR TT.  
 Schweizer Glider with 6.00-6 Tire 4PR TT.

| ILLUS. NO. | PART NUMBER | DESCRIPTION                       | GDYR. CODE NO. | ◆ |
|------------|-------------|-----------------------------------|----------------|---|
|            | 511413S     | WHEEL ASSEMBLY .....              | 395-2311       | 1 |
| -1         | COML        | SCREW .....                       | 395-2244       | 4 |
| -2         | 3028-6      | TERMINAL, Locking .....           | 395-2243       | 4 |
| -3         | 510614      | RING, Bearing closure shaped..... | 395-1043       | 2 |
| -4         | 13889       | CONE, Bearing .....               | 395-0476       | 2 |
| -5         | AN365-428   | NUT, Self locking .....           | 395-1567       | 3 |
| -6         | AN960PD416  | WASHER.....                       | 395-4264       | 3 |
| -7         | 511430S     | WHEEL SUBASSEMBLY, Outboard.....  | 395-2313S      | 1 |
| -8         | 13830       | CUP, Bearing .....                | 395-0477       | 1 |
| -9         | 9521698     | SPACER.....                       | 39521698       | 1 |
| -10        | 511475S     | WHEEL SUBASSEMBLY, Inboard .....  | 395-2391S      | 1 |
| -11        | 9520202     | BOLT.....                         | 39520202       | 3 |
| -12        | C-2311-27   | CLIP, Tinnerman .....             | 395-5234       | 3 |
| -13        | 9520657     | SCREW, Disc drive key .....       | 39520657       | 8 |
| -14        | 9520101     | KEY, Disc drive .....             | 39520101       | 8 |
| -15        | 13830       | CUP, Bearing.....                 | 395-0477       | 1 |

# BRAKE 6.00-6

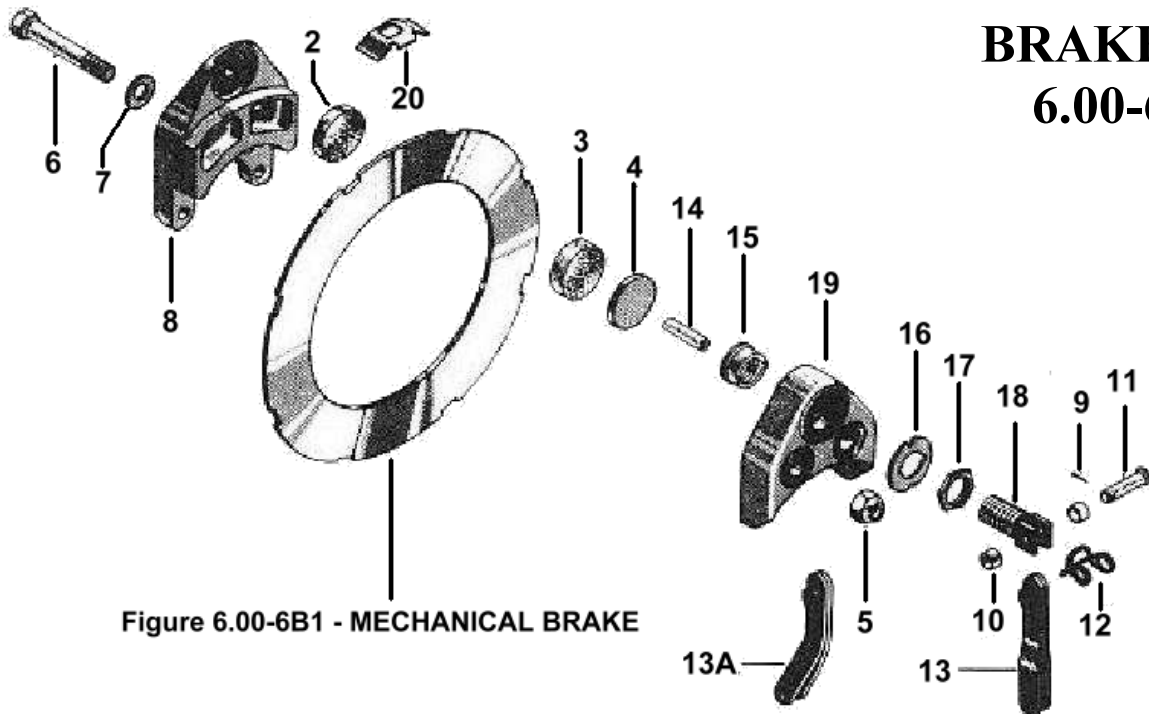


Figure 6.00-6B1 - MECHANICAL BRAKE

USED ON: (Assy. No. 511254A) Aeronca Model 7 and 11  
 Funk B4 and R4  
 Schweizer Glider  
 Sikorsky R4  
 (Assy. No. 9530131) Luscombe Silvaire Model 8 and 8A

| ILLUS. NO. | PART NUMBER | DESCRIPTION                             | GDYR. CODE NO. | ◆ |
|------------|-------------|---|----------------|---|
|            | 511254A     | BRAKE ASSEMBLY .....                    | 395-2213       | 1 |
|            | 9530131     | BRAKE ASSEMBLY .....                    | 39530131       | 1 |
| -1         | 9530292     | DISC, Brake .....                       | 39530292       | 1 |
| -2         | 9511257     | LINING, Anvil.....                      | 39511257       | 1 |
| -3         | 9511258     | LINING, Piston.....                     | 39511258       | 1 |
| -4         | 510647      | PLATE, Pressure.....                    | 395-1055       | 1 |
| -5         | 22FH-624    | NUT, Self locking .....                 | 395-6786       | 2 |
| -6         | 7520221     | BOLT, Hex Head .....                    | 39520221       | 2 |
| -7         | COML        | WASHER.....                             | 395-4771       | 2 |
| -8         | 511252A     | PLATE, Housing.....                     | 395-4893       | 1 |
| -9         | COML        | PIN, Cotter .....                       | 395-4894       | 1 |
| -10        | AN960-416L  | WASHER.....                             | 395-1062       | 2 |
| -11        | AN394-35    | PIN, Flat head .....                    | 395-4691       | 1 |
| -12        | 9510151     | SPRING, Brake release.....              | 39510151       | 1 |
| -13        | 9510191     | LEVER, For brake assembly 511254A ..... | 39510191       | 1 |
| -13A       | 9510194     | LEVER, For brake assembly 9530131 ..... | 39510194       | 1 |
| -14        | 510822      | ROD, Brake push.....                    | 395-1056       | 1 |
| -15        | 510975      | NUT, Adjusting.....                     | 395-1277       | 1 |
| -16        | 510976      | WASHER.....                             | 395-1279       | 1 |
| -17        | 510681      | NUT, Hex lock bushing .....             | 395-0914       | 1 |
| -18        | 510706      | BUSHING, Pushrod.....                   | 395-1057       | 1 |
| -19        | 511251A     | HOUSING, Brake .....                    | 395-4892       | 1 |
| -20        | 9520435     | CLIP, Disc.....                         | 39520435       | 1 |

## G. Disc Retaining Kits

### 1. Description

Disc retaining kits have been developed and are available for 6.00-6 and 6.50-8 wheels. These retaining kits have been developed for use when an operator has had difficulty in retaining the disc clips in the wheel. Installation and removal of disc clips are greatly simplified by the use of this retaining ring.

In the regular disc clip installation, the clip performs several functions – retaining the disc in the wheel, eliminating disc noise, and centering the disc in the wheel.

When the disc retaining ring is used, the disc clips center the disc in the wheel and eliminate the noise, and the disc retaining ring prevents the disc from coming out of the wheel.

Disc retaining ring kits contain all the necessary parts with instructions for installing the disc retaining ring on the wheel.

### 2. The following Disc Retaining Kits are available:

- a. **Retaining Ring Kit 95-5468** – for conversion of 6.00-6 Hi-Flange Wheel, Code 95-2311, Assembly No. 511413M-1.

Used On:

Luscombe Sedan  
Bellanca Cruisair – First 50 Ships  
Cessna 120 and 140 – First 1200 Ships  
Columbia Skyranger  
Globe Swift – First 750 Ships  
Stinson Model 150 – First 130 Ships  
Funk

Kit Contains:

1 pc. – 9530556 Disc Retaining Ring  
4 pcs. – 95-5383 Dot Fasteners  
4 pcs. – 9511103 Disc Clips

- b. **Retaining Ring Kit 95-5469** – for conversion of 6.00-6 Low Flange Wheel, Code No. 95-3472, Assembly No. 511960M-1.

Used On:

Cessna Models 120, 140, 170, Serials 1201 & Up  
Globe Swift, Serials 751 & Up  
Aeronca Model 15  
Ercoupe – All 1946 Models  
Stinson Model 150, Serials 131 & Up

Kit Contains:

1 pc. – 9530637 Disc Retaining Ring  
4 pcs. – 95-5383 Dot Fasteners  
4 pcs. – 9520545 Disc Clips

- c. **Retaining Ring Kit 95-5471** – for conversion of 6.06-6 Hi-Flange Wheel, Code 95-2311, Assembly No. 511413M-1 and 511413MR.

Used On:

Luscombe Silvaire Mechanical Brake  
Aeronca Champion & Chief – All 1946 Models

Kit Contains:

- 1 pc. – 9530556 Disc Retaining Ring
- 4 pcs. – 95-5383 Dot Fasteners
- 4 pcs. – 9511103 Disc Clips
- 1 pc. – 9510397 Axle Spacer

- d. **Retaining Ring Kit 95-5472** – for conversion of 6.00-6 Cross-Wind Wheel Assemblies 9530525, 9530526, 9530242, 9530243, 9530381, 9530382 and for conversion of 6.00-6 Hi-Flange Wheel, Assembly No. 9520682.

Kit Contains:

- 1 pc. – 9530593 Disc Retaining Ring
- 4 pcs. – 95-5383 Dot Fasteners
- 4 pcs. – 9511103 Disc Clips

- e. **Retaining Ring Kit 95-5724** – for conversion of 6.50-8 Wheel, Code No. 95-3296, Assembly No. 530869M.

Used On:

Beech Model 35 “Bonanza”

Kit Contains:

- 1 pc. – 9530533 Disc Retaining Ring
- 5 pcs. – 95-5383 Dot Fasteners
- 5 pcs. – 9520733 Disc Clips

### 3. Instructions for Converting Wheels Not Drilled for Retaining Ring Fasteners.

#### a. Marking wheels for drilling.

1. 6.00-6 wheels should be drilled midway between the drive keys which do not contain anti-rattle clip bosses. Four holes will be required in these wheels. See figure 13.

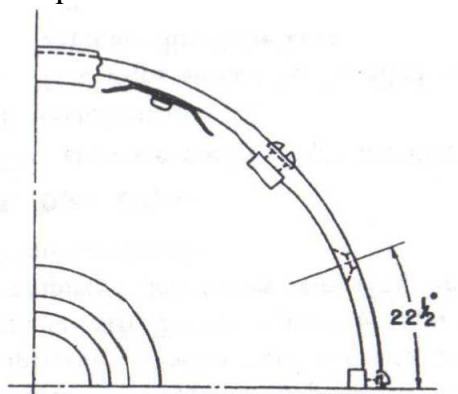


Figure 13 -- Spacing Diagram for Drilling 6.00-6 Wheels

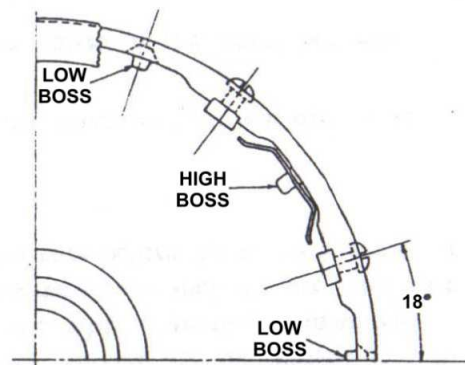


Figure 14 -- Spacing Diagram for Drilling 6.50-8 Wheels

2. 6.50-8 wheels should be drilled midway between the high clip bosses which will place the drilled holes adjacent to the low clip bosses. Five holes will be required in these wheels. See figure 14.
- b. Drill and counter sink wheel in accordance with Figure 15.
- c. Apply two coats of zinc chromate primer and two coats aluminum lacquer to machined surfaces.
- d. Assemble as illustrated in Figure 16.

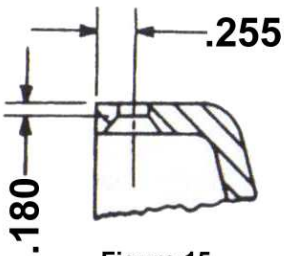


Figure 15

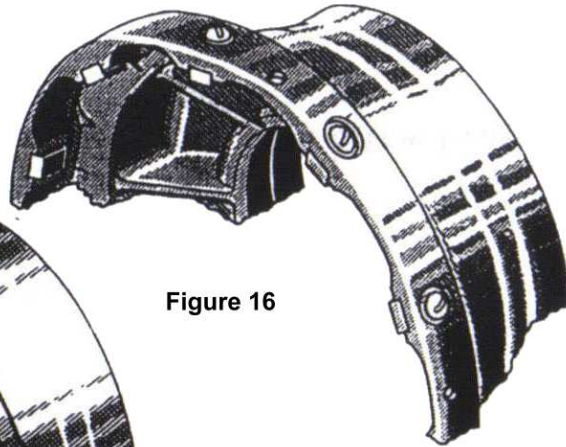
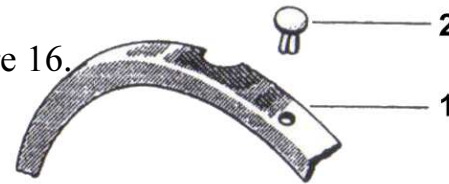


Figure 16

1. Disc Retaining Ring
2. Dot Fastener

#### e. Installation

1. Install retaining ring on axle and place over the brake before installing disc.
2. Install disc in brake.
3. If installing mechanical brake, install axle spacer No. 9510397 on axle in addition to regular spacer.
4. Install wheel on axle and brake disc.
5. Adjust and safety axle nut.
6. Install disc anti-rattle clips that are furnished with retaining ring kit.

#### NOTE

Four disc clips are required for 6.00-6 wheels. Five disc clips are required for 6.50-8 wheels and should be installed on the high clip bosses

7. Place retaining ring on wheel.
8. Secure retaining ring by pressing Dot Fasteners into position.